



Module 5

AG
H₂O onward 

Moving Onward
Where to Go From Here



AgH2Onward
 Module 5
 Moving Onward - Where To Go From Here?

Water Security Agency | **AG H₂Onward** | wsask.ca

1

Module 5 Outline

- Applying
- Meeting mitigation requirements- WSA may ask you to...
- When approvals hit road bumps- guidance
- Post approval- now what?

2

COLLABORATION

Water Security Agency's Goals:

- ▶ Collaboration
- ▶ Mitigating Risks/Impacts
- ▶ Bringing Works into Compliance
- ▶ Approvals
- ▶ To follow the Act

3

Qualified Persons (QP)– *Their Role*



- Hired by farmers to assist in the application process
- Advise on best management practices and process
- Help communicate about the approval process between network landowners /WSA/ RM etc.
- Design drainage projects with landowners

4

Steps to prepare an application...



- ▶ Determine the Network Extent of the Project
- ▶ Preparation of Plans (Identification of Works)
- ▶ Determine Wetland Retention Requirements
- ▶ Design of Mitigation Works/ Adaptive Practices
- ▶ Identify all Legal Parcels
- ▶ Fill out Application Form

5

Let's Dig Deeper... Your role in a successful Approval...

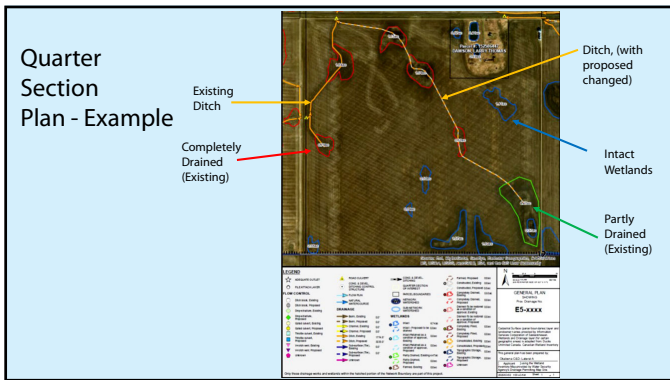


- ▶ You and your QP each have roles.
- ▶ Knowing where to start, how to start, and what order to do things in can be most daunting.

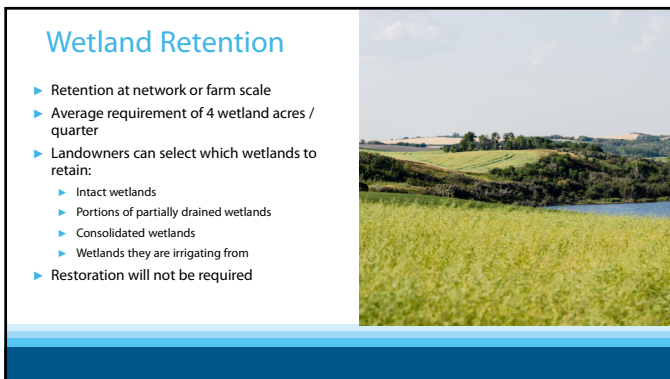
6



7



8



9

How much wetland area needs to be retained?

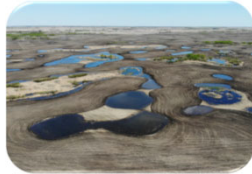
- ▶ Conditions of the local watershed will determine amount of wetland area to be retained
 - ▶ Most watersheds have minimum retention target of 40% wetland area (pink)
 - ▶ Some watersheds have higher retention target of 60% (blue)



10

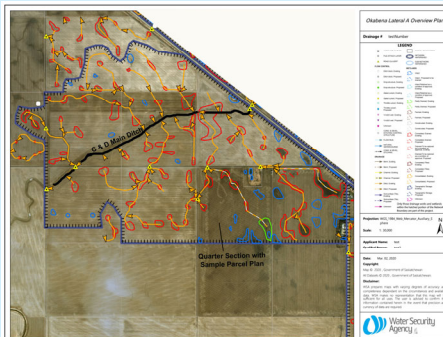
How are retained wetlands chosen?

- ▶ Producers decide which wetlands should be retained
 - ▶ WSA provides a flexible, farm-level approach to retaining wetlands
 - ▶ Retained wetlands can be:
 - ▶ within the project boundary
 - ▶ adjacent to projects, or
 - ▶ even several kilometers away.



11

Overview Plan - Example



12



Adaptive Practices in Drainage

13

Meeting Mitigation Requirements

Your region is implementing province-wide regulations with local considerations in mind.

As such, WSA may ask certain things of you, including:

- ▶ install flow controls
- ▶ retain a percentage of wetlands
- ▶ expand your network
- ▶ grass ditches
- ▶ draw-down instead of a complete drain
- ▶ study hydrology
- ▶ Point of Adequate Outlet further downstream
- ▶ additional structures, reshaping.

14

Meeting Mitigation Requirements

Take a step back and consider why WSA might be asking for a certain adaptive practice?

- ▶ Local knowledge of the soil/ soil movement?
- ▶ Industry standard?
- ▶ Value of wetlands retained in the area/ value of wetlands to buffer events?
- ▶ Buffering & adapting to extreme events & range of climate variability?
- ▶ Past road or infrastructure issues?
- ▶ Good ag policy/ perception?
- ▶ Proximity to a town or village?
- ▶ Species at risk habitat?

15

Asking for Land Permission - TIPS

- ▶ Admit it, a drainage approval is a new thing for you to ask for, but an approval will provide clarity and solidify good practices
- ▶ Talk about your project and why you are doing your project
- ▶ Share if it is existing and you are bringing it into compliance or if it is a new project
- ▶ Talk about what risks/impacts are mitigated in the project and how; talk about how you see it operating
- ▶ Ask what their needs are; discuss how it can be agreed to let water pass; discuss if they have works to add to the project
- ▶ Ask what they will grant to you

16

Common Question???

When can I start construction?

- **Not** until you have an Approval in hand.

Even for a simple project, 6 months is not out of the normal for the time it takes to work through to an Approval.

17

Request For Assistance and Approvals

Some elements of an Approval change when it is driven by a Request For Assistance

Resolution can be worked towards when the root of the complaint is addressed

18

Request For Assistance and Approvals

- ⌚ There will be a time period placed on the time you can work through the approval
- 🏠 There may be the requirement for specific elevations or grades to be met at specific field locations
- ✓ Mitigation designs remain an important tool
- ✗ Operation and Maintenance documents become required
- 📅 Additional scrutiny and follow up visits for compliance likely

19

Road Bumps to an Approval- GUIDANCE

Sometimes approvals cannot be granted. This can be very disappointing or devastating for a producer.

↓


What Can You Do?

not construct until approved	have a secondary plan	budget the project on a conservative benefit from the start
------------------------------	-----------------------	---

20

Common Road Bumps to an Approval

- ▶ Land permission won't be granted (RM, fellow landowner, person downstream, railway)
- ▶ Disagreement on location of Point of Adequate Outlet
- ▶ Engineering is required & isn't complete
- ▶ The proposed engineering solution is more than the proponent wants to pay



21

Common Road Bumps to an Approval


- ▶ The basin is an extreme risk basin
- ▶ The risks/impacts of the project are deemed too great
- ▶ The risks/impacts cannot be mitigated, or a solution cannot be found to address the risk/impact
- ▶ The proponent is not willing to meet the proposed conditions (such as retained wetlands, timed releases)
- ▶ Paperwork lost at either end



22



23



SECTION 7 - APPROVAL TO CONSTRUCT DRAINAGE WORKS

Presented to The Water Security Agency Act and The Water Security Agency Regulations, each as amended or replaced from time to time:

Provincial Drainage Number: E5-2163
 Issued on: August 4, 2019
 Expires on: August 4, 2019


Read • Read your Approval

File • File Approval & maps

Share • Share conditions

Mitigate • Apply your adaptive practices & be conscientious of neighbors

24



Module 5 Summary

- ▶ Agriculture is continually 'moving onward', achieving the next level of production and responsiveness. Many producers are choosing to make drainage a focus of their responsiveness and on-farm adaptation.
- ▶ Your WSA region may ask you to meet certain mitigation requirements.
- ▶ When approvals hit road bumps there are options for producers.
- ▶ With an approval, ensuring follow through is the next important step.

25



After leaving the workshop:
how do I
MOVE ONWARD?

26
