

Upper sands: occur between tills
of the Floral Formation

Lower sands: occur between lower till
of the Floral Formation and till of the
Sutherland Group

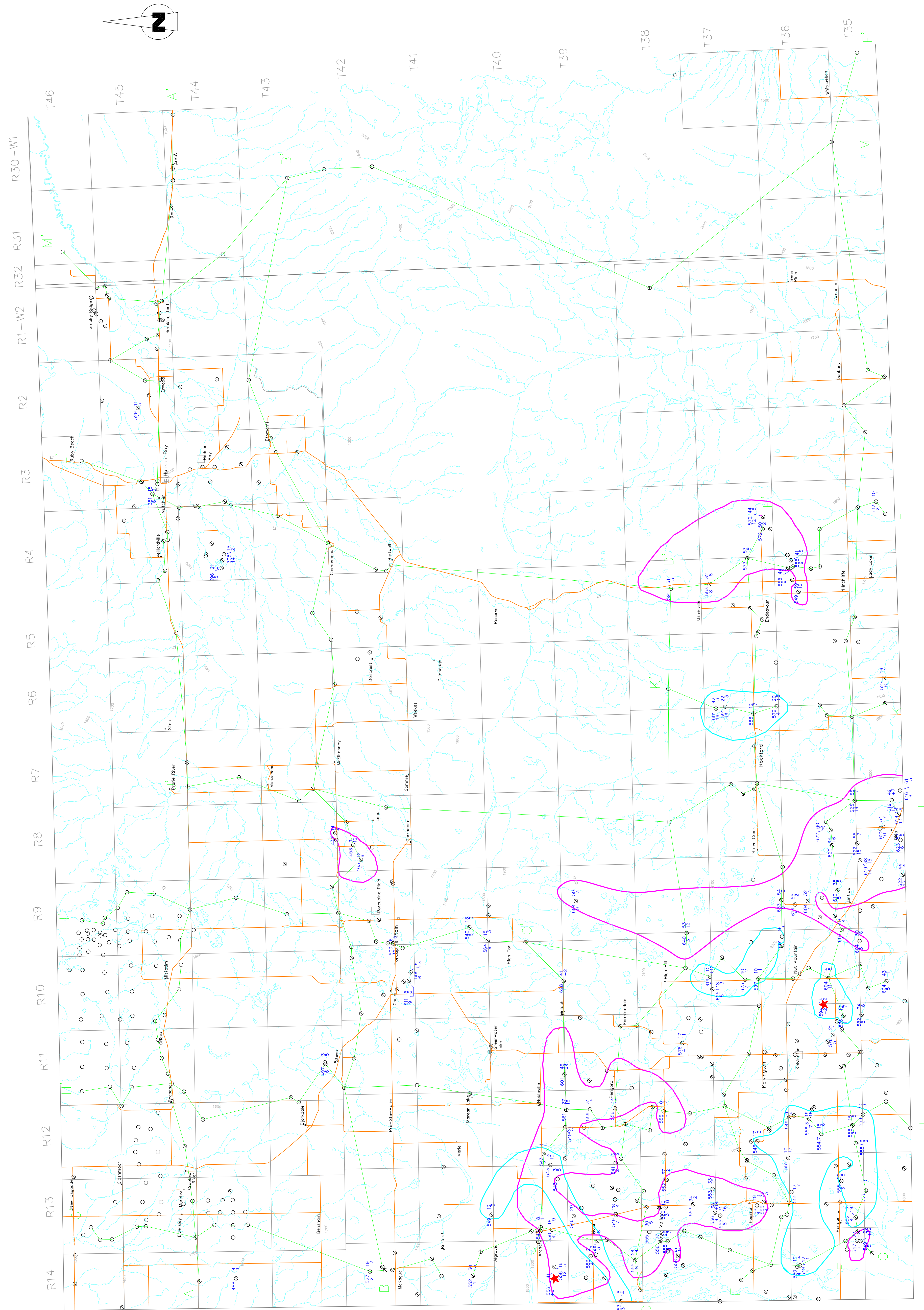
Explanation of Symbols

F — F' Cross Section

○ E-log only

⊖ E-log, geologist description

⊗ E-log, driller's log



This document may not be copied without the consent of the authors. However, copies may be made, except for resale, for personal or internal use of the client, provided the original publication is cited where appropriate.

These maps are accompanied by a series of cross sections which depict the subsurface units along the transects shown on the map. The maps and cross sections are representations of the data boundaries outline areas in which the aquifer or geologic unit is likely to be found. Aquifers and other geologic units may not always occur continuously within the areas shown, may not be continuous from one section to the next, and may occur in zones thinner than those indicated. Discontinuous water bearing zones may be found outside the boundaries shown.

Preliminary Map August 1996
A portion of this work was done under contract to the Saskatchewan Water Corporation.
This support is gratefully acknowledged.

