

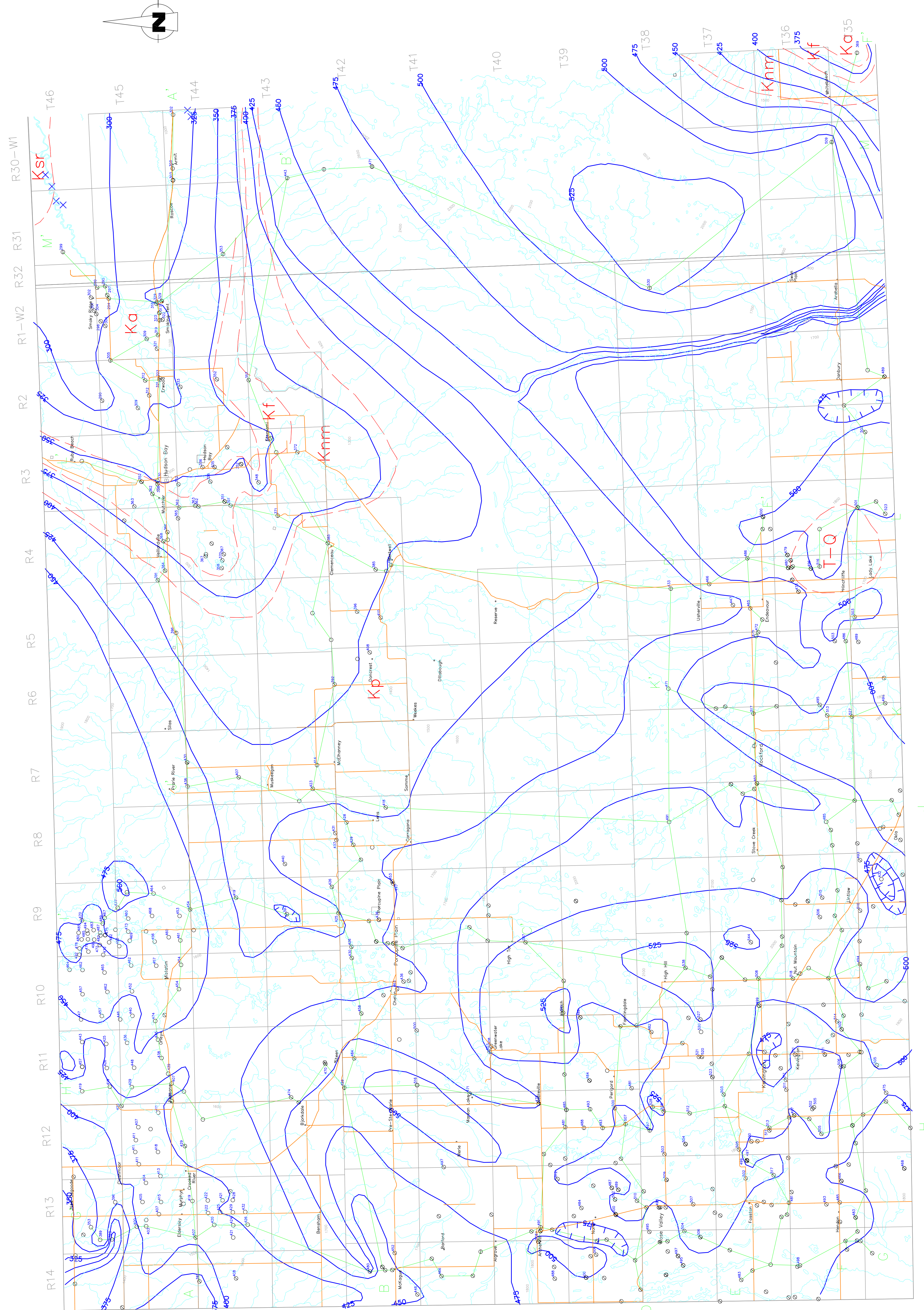
Geology and Groundwater Resources of the  
Hudson Bay Area (63C-D)

Map 2  
Bedrock geology and topography

- T-Q – Undifferentiated Tertiary-Quaternary: gravels, sands, and silts. Includes the Wynyard Formation and the Brederbury Formation.
- Kp – Pierre Shale: gray, noncalcareous silty clay and clay, concretionary zones common near base
- Knm – Niobrara Formation: lower calcareous member is composed of dark gray, chalk-speckled shales upper member is composed of noncalcareous shales and bentonite beds
- Morden Shale: uniform, black, noncalcareous shale with rare bentonite beds
- Kf – Favel Formation: dark gray, chalk-speckled, calcareous clays, with lenses and stringers of limestone and bentonite
- Ka – Ashville Formation: noncalcareous silt and clay
- Ksr – Swan River Formation: interbedded fine to coarse sands, silt and clay, locally carbonaceous with thin coal seams

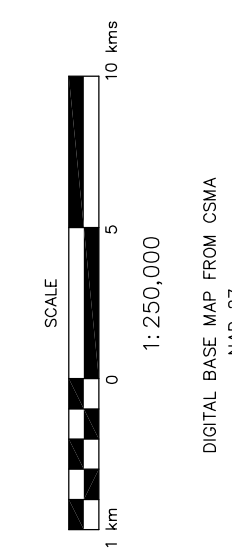
Explanation of Symbols

- F—F' Cross Section
- X Bedrock Exposure (McNeil and Caldwell, 1981)
- O E-log only
- ⊖ E-log, geologist description
- ⊗ E-log, driller's log
- ⊙<sup>409</sup> Bedrock Surface elevation (masl)
- Geological Contact (inferred)
- Bedrock Surface contour (CI=25m)



This document may not be copied without the consent of the authors. However, copies may be made, except for resale or internal use of the client, provided the original publication is cited where appropriate.

These maps are accompanied by a series of cross sections which depict the subsurface units along the transects shown on the map. The maps and cross sections are representations of the data boundaries outline areas in which the aquifer or geologic unit is likely to be found. Aquifers and other geologic units may not always occur continuously within the areas shown, may not be continuous from one well to another, and may occur in zones other than those indicated. Discontinuous water bearing zones may be found outside the boundaries shown.



Preliminary Map August 1996  
A portion of this work was done under contract to the Saskatchewan Water Corporation.  
This support is gratefully acknowledged.