

Geology and Hydrostratigraphy of the Melville Region (62L-K), Saskatchewan

Map 2 Bedrock Surface Geology and Topography

- TQu** – Tertiary Quaternary Undiff.
- Kb** – Bearpaw Formation
- Kjr** – Judith River Formation
- Klp** – Lea Park Formation
- Kp** – Pierre Formation

Contour of bedrock topography (25 metre contours)

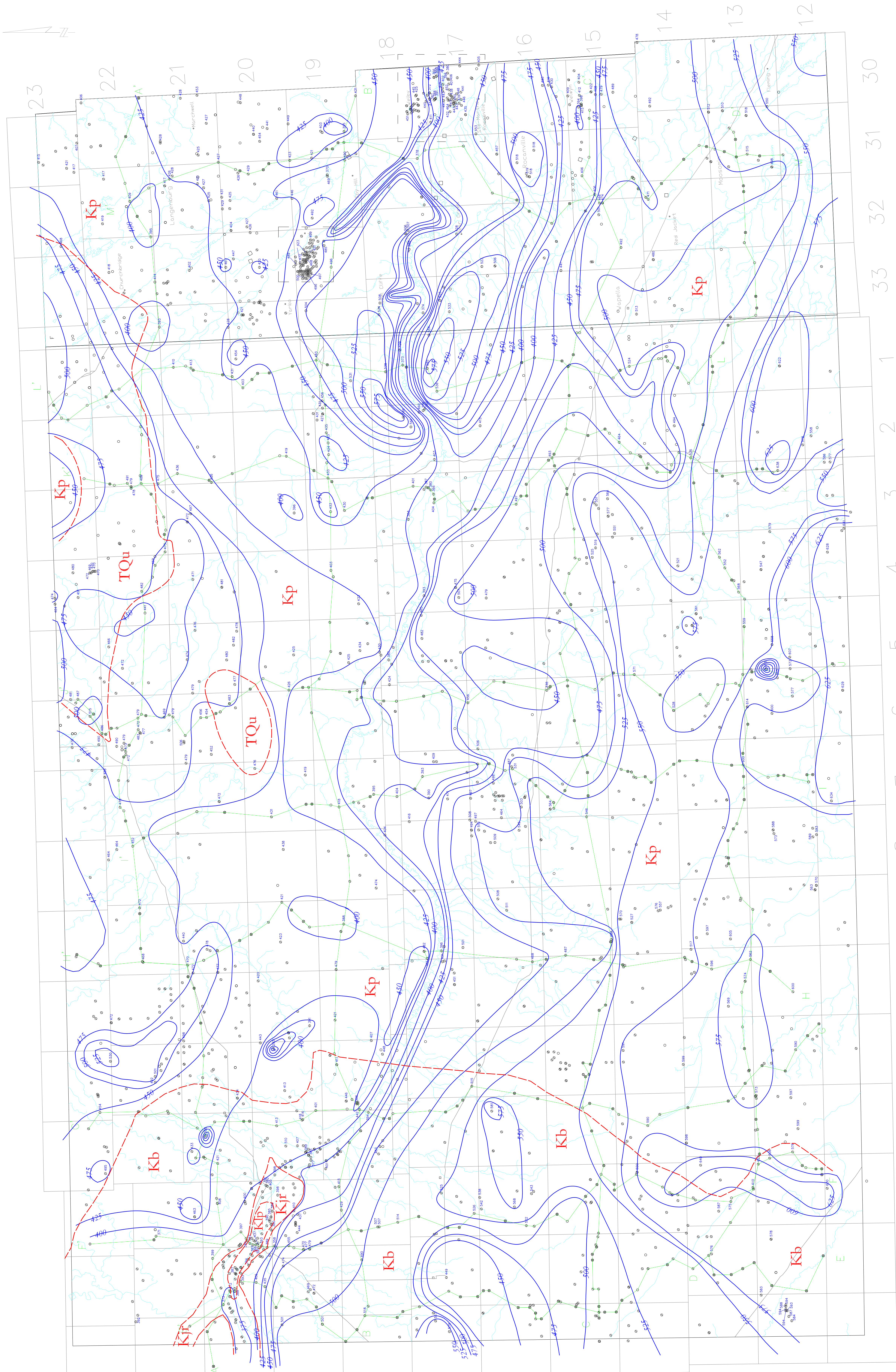
Formation Boundary

only selected data used due to density of testholes

LEGEND

F—F' Cross Section

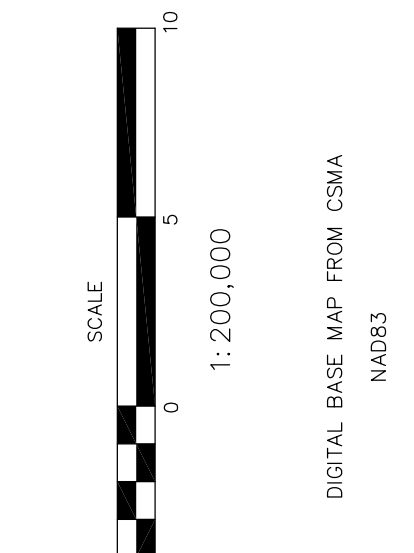
- E-log only
- ⊖ E-log, geologist description
- ⊙ E-log, driller's log
- SRC Observation Well
- ⊙ Elevation of bedrock, in metres above sea level



These maps are accompanied by a series of cross sections which depict the subsurface units along the transects shown on the map. The maps and cross sections are representations of the data taken from the testholes and wells indicated on the maps. The boundaries outline areas in which the aquifer or geologic unit always occur continuously within the areas shown, may not be found at a specific site or may occur at elevations other than those indicated. Discontinuous water bearing zones may be found outside the boundaries shown.

This document may not be copied without the consent of the authors. However, copies may be made, except for resale, for personal or internal use of the client, provided the original publication is cited where applicable.

A portion of this work was done under contract to the Saskatchewan Water Corporation. This support is gratefully acknowledged.



SCALE
1 km 10 km
1:200,000
DIGITAL BASE MAP FROM DSM
NAD83