

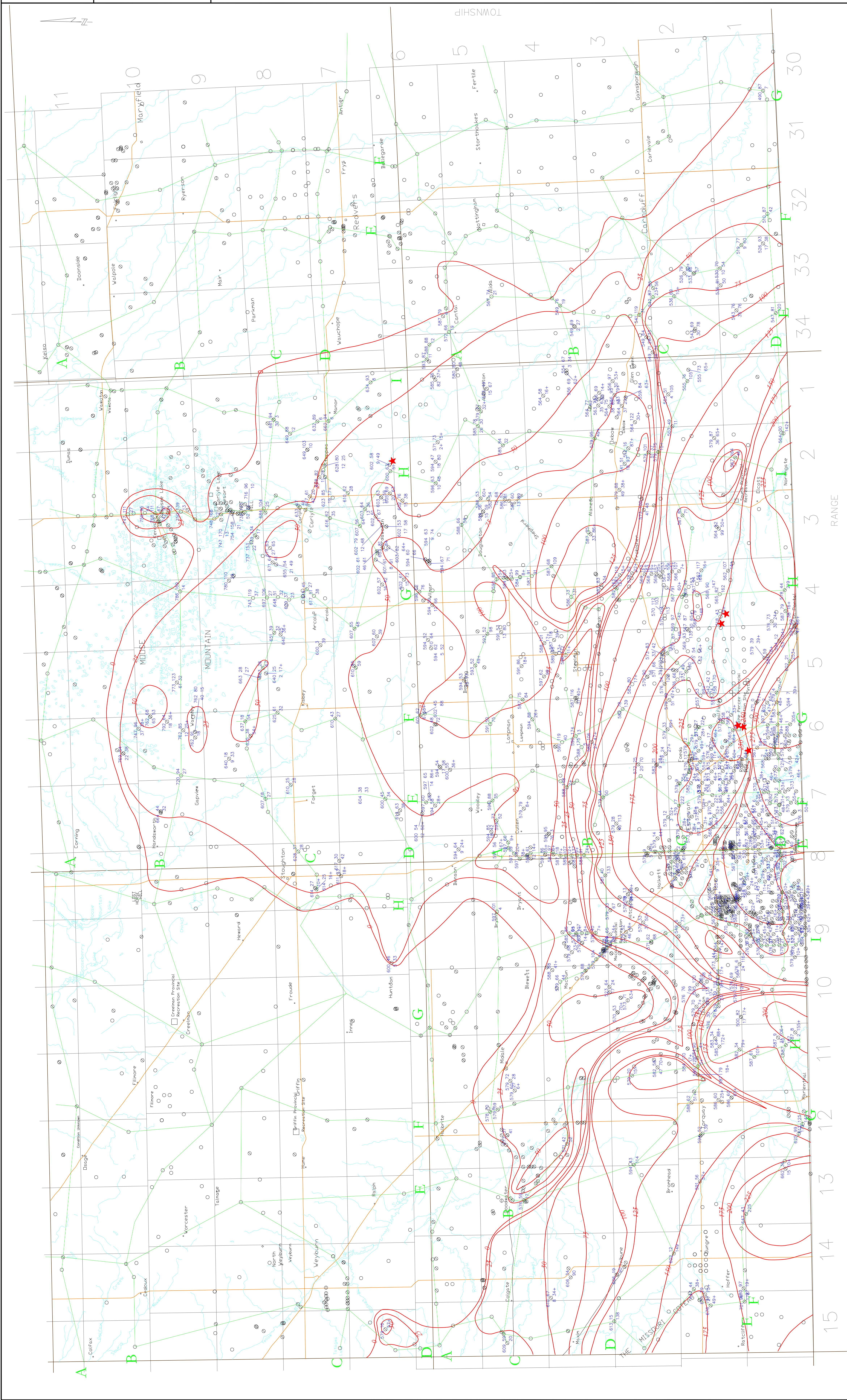
Geology and Groundwater Resources
of the Weyburn/Virden Area (62E/F),
Saskatchewan

Map 4
Isopach map of the
Eastend to
Ravenscrag Formations

Elevation (masl) ○ Depth to top
Depth to water ○ Thickness
(all units are in metres)
(depths are below ground surface)

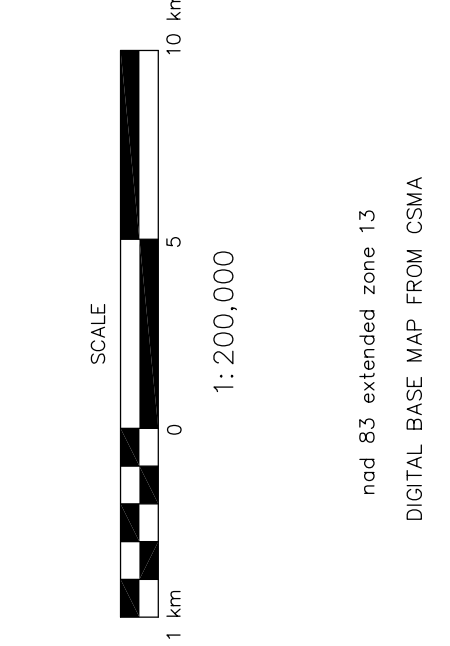
LEGEND

- F—F' Cross Section
- E-log only
- ⊖ E-log, geologist description
- ⊙ E-log, driller's log



These maps are accompanied by a series of cross sections, which
direct the reader to the data points on the map.
The maps and cross sections are representations of the data
taken from the testholes and wells indicated on the maps. The
boundaries outline areas in which the aquifer or geologic unit
is present. They are not intended to show the exact location of
discontinuities within the geologic unit. The maps may not be
found at a specific site or may occur at elevations other than
those indicated. Discontinuous water bearing zones may be
found outside the boundaries shown.

This document may not be copied without the consent
of the authors. However, copies may be made
for resale, for personal or internal use of the client,
provided the original publication is cited where
applicable.



A portion of this work was done under contract
to the Saskatchewan Water Corporation.
This support is gratefully acknowledged.



Accompanies:
Simpson, M.A., 1993: Geology and Ground
water Resources of the Weyburn/Virden
Area (62E.F.), Saskatchewan. Saskatchewan
Research Council Report R-1210-3-E-93.
and edward@src.gov.sk.ca